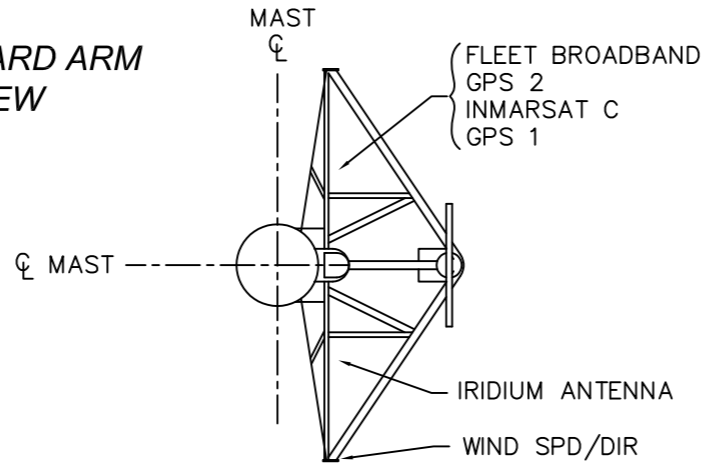
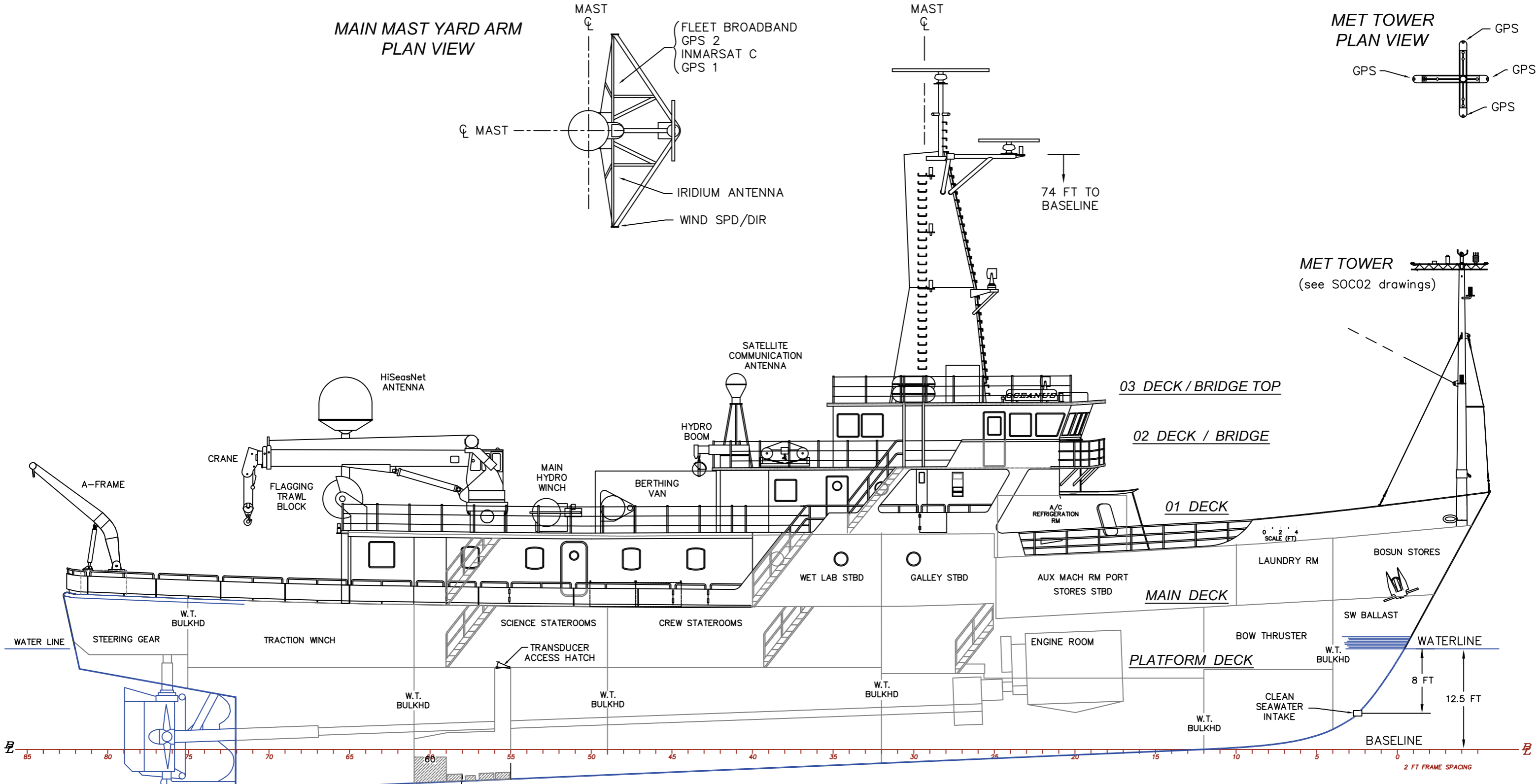
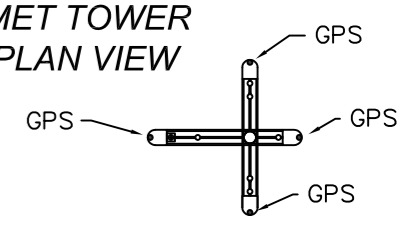


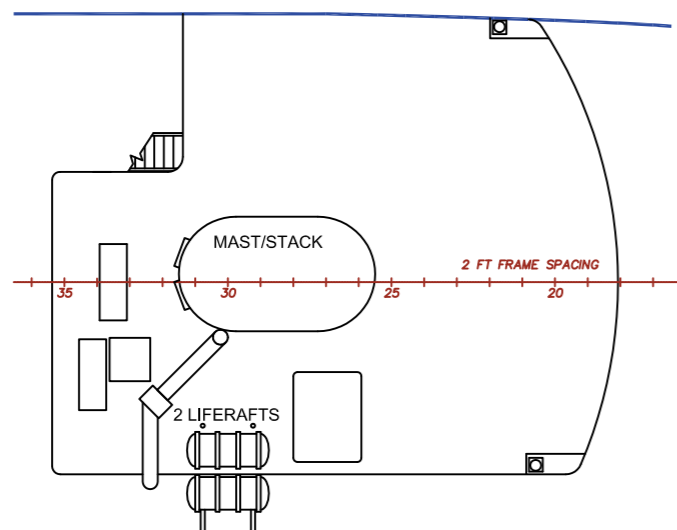
**MAIN MAST YARD ARM PLAN VIEW**



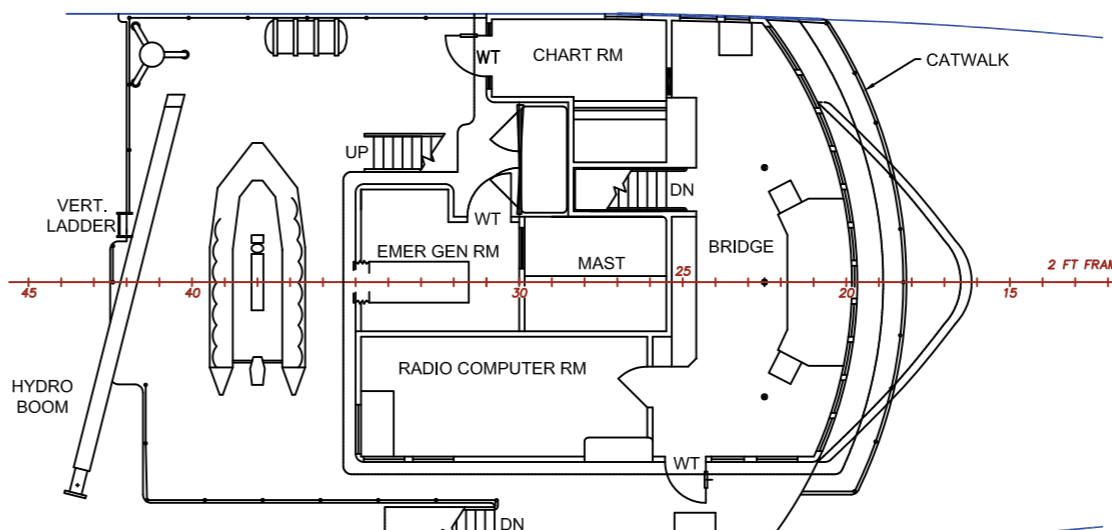
**MET TOWER PLAN VIEW**



**COMPOSITE PROFILE, R/V OCEANUS**



**03 DECK, R/V OCEANUS**



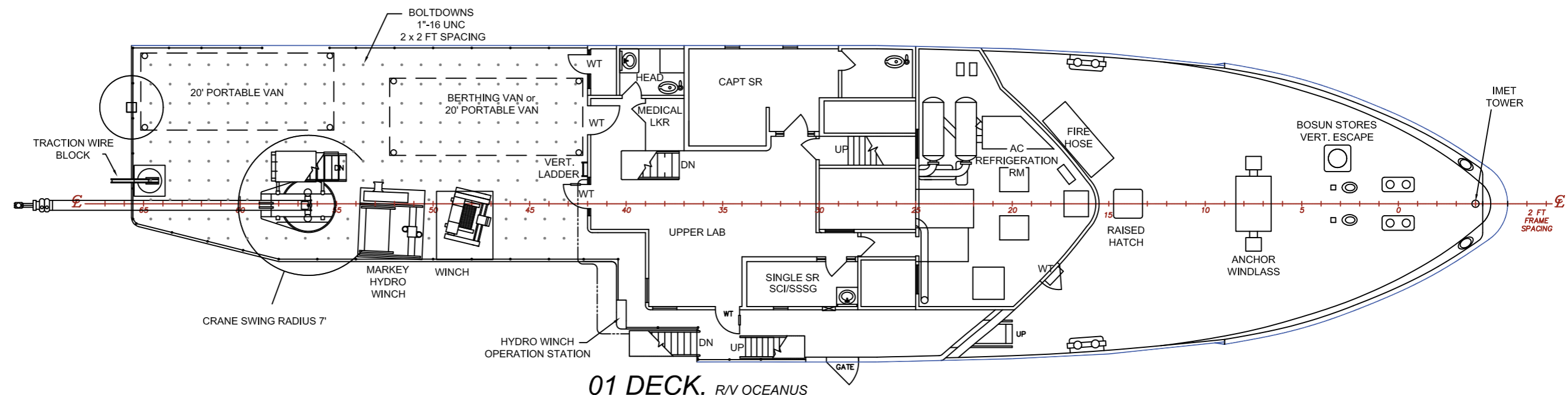
**02 DECK, R/V OCEANUS**

**TYPICAL VAN PLACEMENT SHOWN**

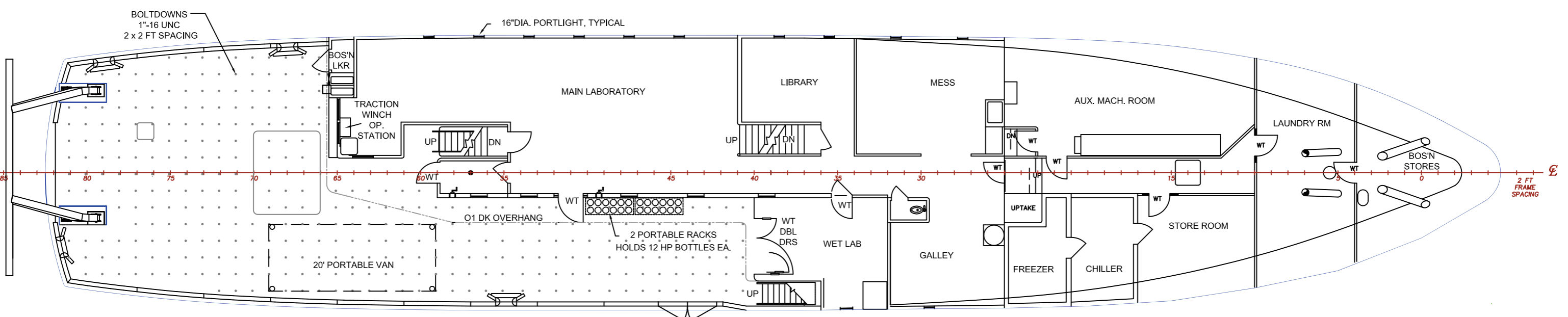
TONAGE CAPACITY LIMIT =  
 2 REGULAR VANS (incl. berthing van)  
 PLUS 1 SOFT TOP VAN

01 DECK AFT:  
 2 EACH, 8'X20' VANS POSITIONED FORE/AFT

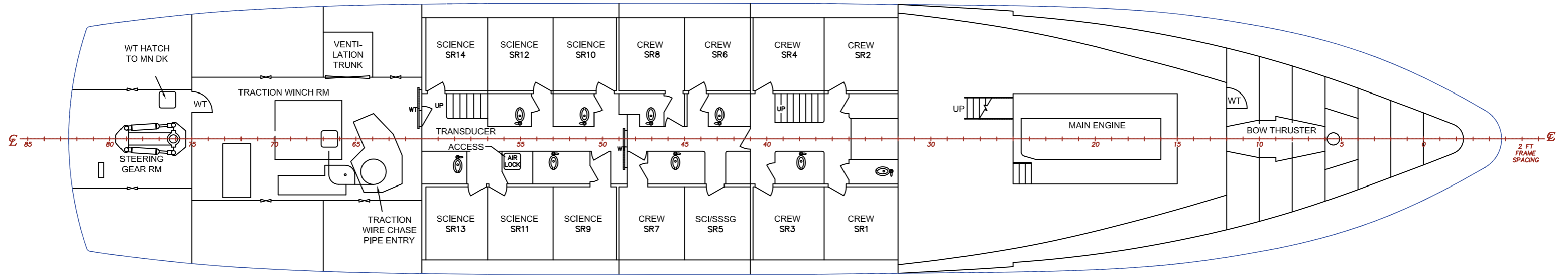
MAIN DECK AFT:  
 ARRANGEMENTS MADE ON SPECIAL REQUEST.  
 (VULNERABLE TO SEAS AND MAY LIMIT  
 ACCESS TO A-FRAME)  
 SPACES AVAILABLE IF NECESSARY  
 ON SPECIAL CASE BASIS:  
 1 VAN IN FRAME LOCATION 48-58 STBD SIDE;  
 1 OR 2 VANS IN AFT AREA  
 (THIS LIMITS A-FRAME TRAVEL.)



**01 DECK, R/V OCEANUS**



**MAIN DECK, R/V OCEANUS**



**2nd DECK, R/V OCEANUS**